

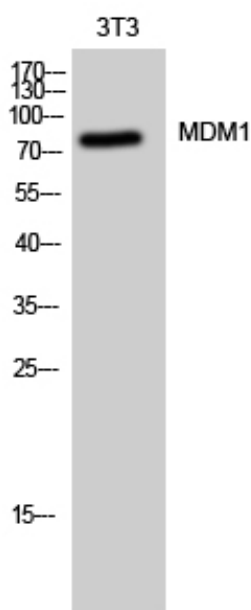


MDM1 Polyclonal Antibody

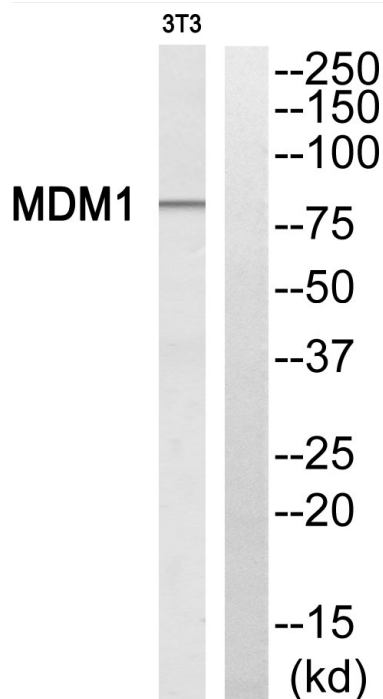
Catalog No	YP-Ab-00443
Isotype	IgG
Reactivity	Human;Mouse;Rat
Applications	WB;ELISA
Gene Name	MDM1
Protein Name	Nuclear protein MDM1
Immunogen	The antiserum was produced against synthesized peptide derived from human MDM1. AA range:665-714
Specificity	MDM1 Polyclonal Antibody detects endogenous levels of MDM1 protein.
Formulation	Liquid in PBS containing 50% glycerol, 0.5% BSA and 0.02% sodium azide.
Source	Polyclonal, Rabbit,IgG
Purification	The antibody was affinity-purified from rabbit antiserum by affinity-chromatography using epitope-specific immunogen.
Dilution	Western Blot: 1/500 - 1/2000. ELISA: 1/5000. Not yet tested in other applications.
Concentration	1 mg/ml
Purity	≥90%
Storage Stability	-20°C/1 year
Synonyms	MDM1; Nuclear protein MDM1
Observed Band	80kD
Cell Pathway	Nucleus . Cytoplasm, cytoskeleton, microtubule organizing center, centrosome . Cytoplasm, cytoskeleton, microtubule organizing center, centrosome, centriole . Localizes to the centriole lumen. .
Tissue Specificity	Brain,Epithelium,Prostate,Testis,Trachea,
Function	similarity:Belongs to the MDM1 family.,
Background	This gene encodes a nuclear protein similar to the mouse double minute 1 protein. The mouse gene is located in double minute (DM) chromatin particles, is amplified in the mouse transformed 3T3 cell line, and the encoded protein is able to bind to p53. Alternatively spliced transcript variants encoding different isoforms have been found for this gene. [provided by RefSeq, Mar 2011],
matters needing attention	Avoid repeated freezing and thawing!
Usage suggestions	This product can be used in immunological reaction related experiments. For more information, please consult technical personnel.



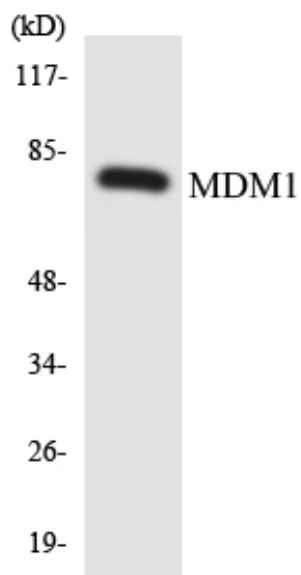
Products Images



Western Blot analysis of 3T3 cells using MDM1 Polyclonal Antibody cells nucleus extracted by Minute TM Cytoplasmic and Nuclear Fractionation kit (SC-003, Inventbiotech, MN, USA).



Western blot analysis of MDM1 Antibody. The lane on the right is blocked with the MDM1 peptide.



Western blot analysis of the lysates from HepG2 cells using MDM1 antibody.